



Build the future, today



ABOUT OHMNI LABS

Ohmni Labs is a Silicon Valley-based company focused on providing demand-driven robotics solutions. Since founding in 2015, we've sold thousands of robots to a variety of sectors in more than 50 countries across the world. Our on-site manufacturing allows us to design, engineer, and manufacture custom robots based on customer needs at unrivaled speed.

CONTACT US

sales@ohmnilabs.com

ohmnilabs.com/learn-more



©Ohmni Labs LLC. Manufactured & Build in the USA



OHMNI PRO AUTONOMY EDITION

The perfect platform for developing your own robot application. Get out-of-the-box production-grade hardware with our fully tuned ROS autonomy stack.

ohmnilabs.com/learn-more

FEATURES

Based on our award-winning Ohmni
Telepresence Robot platform



10.1" HD capacitive
touchscreen, high
brightness

Long-lasting 3-4
hour battery life

Coral TPU (optional)

High power Intel WiFi chip
+ OhmniLabs custom WiFi
roaming enhancements

RPLidar S2
(long range 30m ToF)

Telepresence/Teleoperation
software (cloud + local)

Bosch IMU for
robust odometry

30W charging dock w/
autodocking

4K front camera &
2MP navigation
camera

Quad MEMS mic array w/
echo cancellation &
beamforming

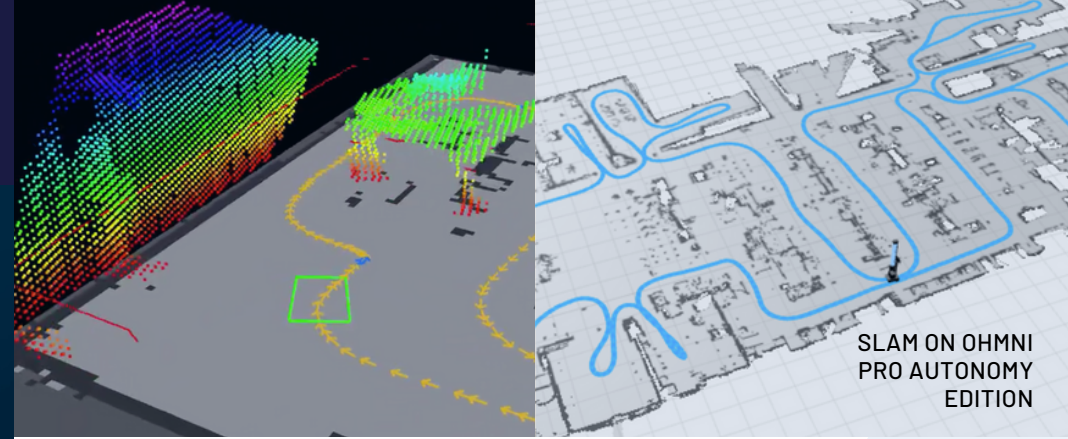
Runs OhmniOS - Android
with full Ubuntu + ROS
underneath

Realsense D435

Intel quad-core
64-bit CPU (up to 2.5 GHz)
w/ 4GB RAM / 32GB eMMC

Lightweight &
foldable only 25lbs

Silent direct drive
brushless motors
w/encoders



PERFECT FOR HCI & MOBILE ROBOT DEVELOPMENT

Leverage Ohmni Pro's enterprise-grade telepresence technology to build interesting apps. A security guard calling into a robot? A receptionist guiding visitors around the building? No need to mess with getting enterprise-grade WiFi roaming to work or figuring out low-latency, high-performance HD video codecs, and WebRTC signaling.

SSH into the underlying Ubuntu environment and get full access to the running ROS stack. Push your own compiled ROS code, send move_base goals, or listen to any of the ROS topics that you want.

Code up on-screen UI/UX for the robot as either an Android app or an OhmniAPI web page. OhmniAPI lets you access and control the robot via JS calls on a page, making it easy to build cloud-connected robotic applications.

Multiple base models available
HW and SW customizations for larger orders

 OHMNILABS

ohmnilabs.com/learn-more